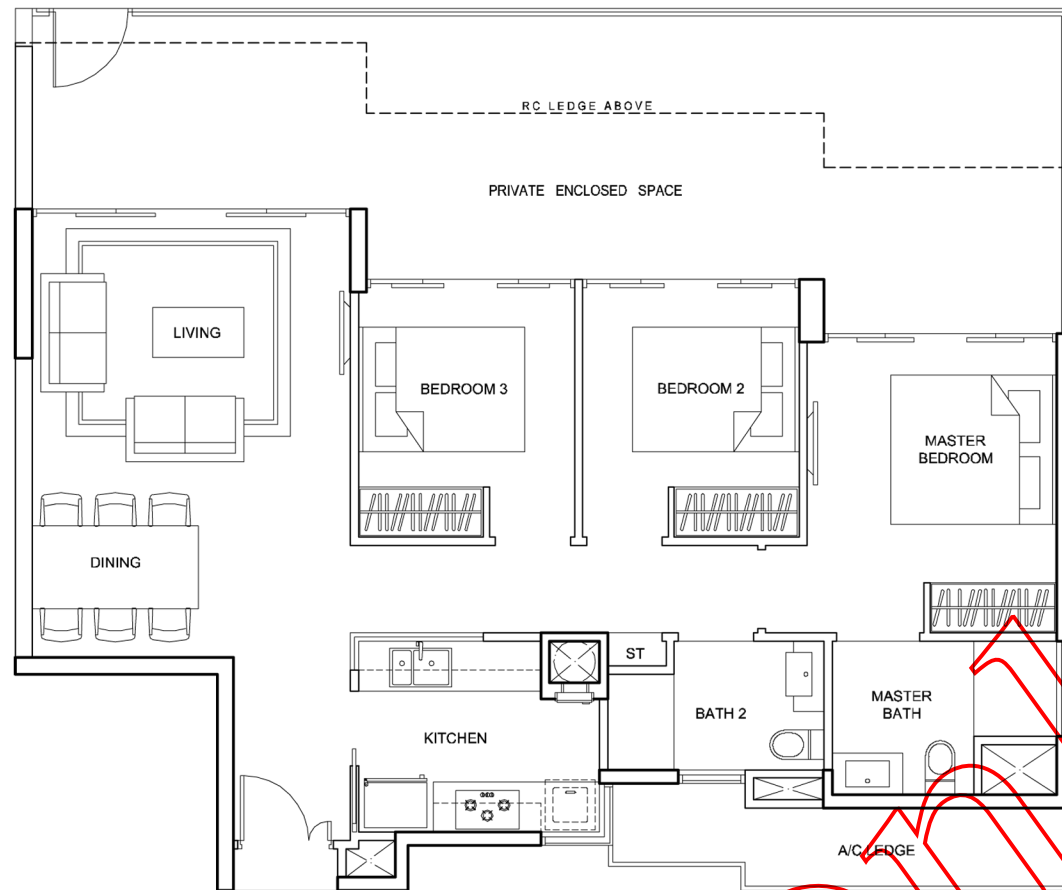


**DRAFT**

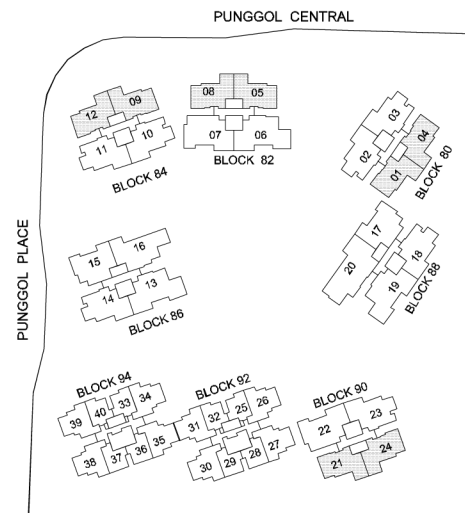
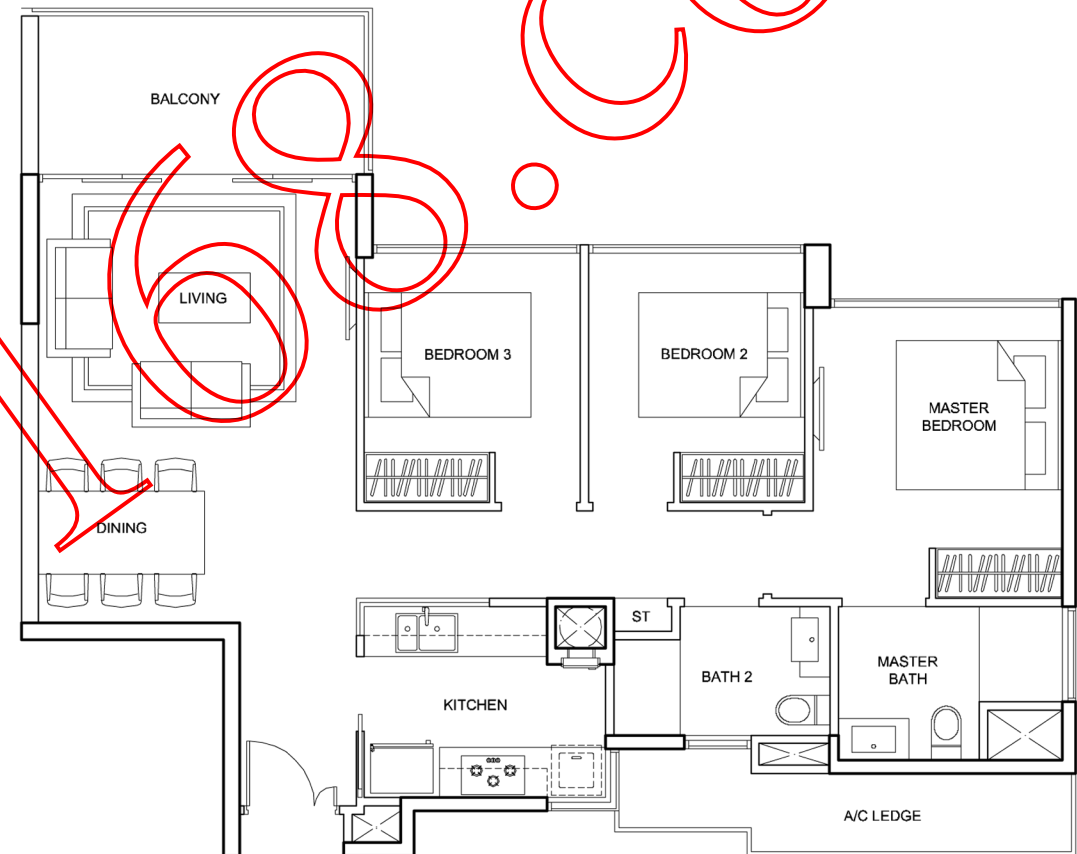
TYPE C1P1  
AREA: 123 SQ.M

Unit(s): # 01-01 , # 01-05  
# 01-08 (mirror image) , # 01-09



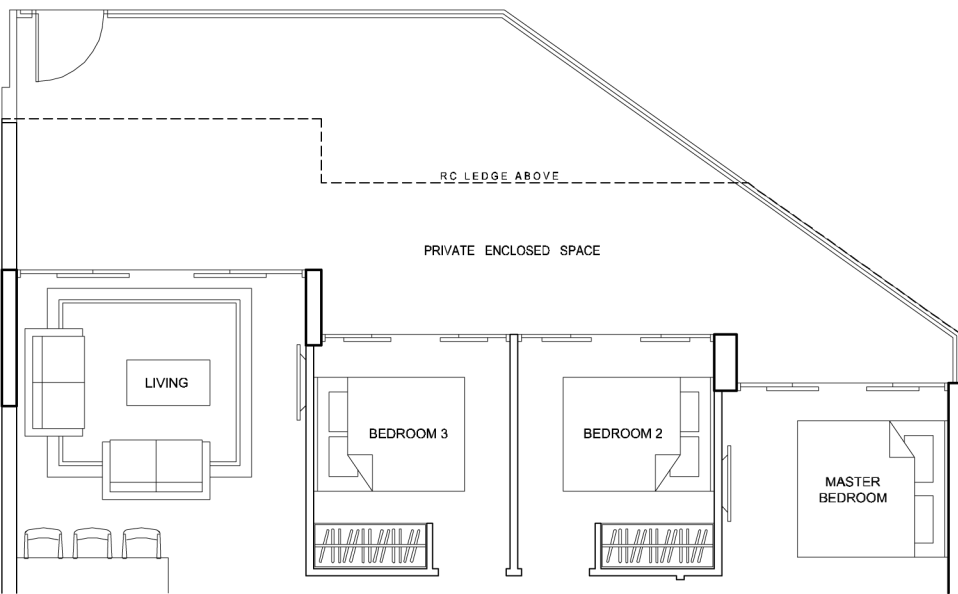
TYPE C1  
AREA: 92 SQ.M

Unit(s): #02-01 TO #15-01 , #02-04 TO #15-04 (mirror image)  
#02-05 TO #15-05 , #02-08 TO #15-08 (mirror image)  
#02-09 TO #15-09 , #02-12 TO #15-12 (mirror image)  
#02-21 TO #15-21 , #02-24 TO #15-24 (mirror image)



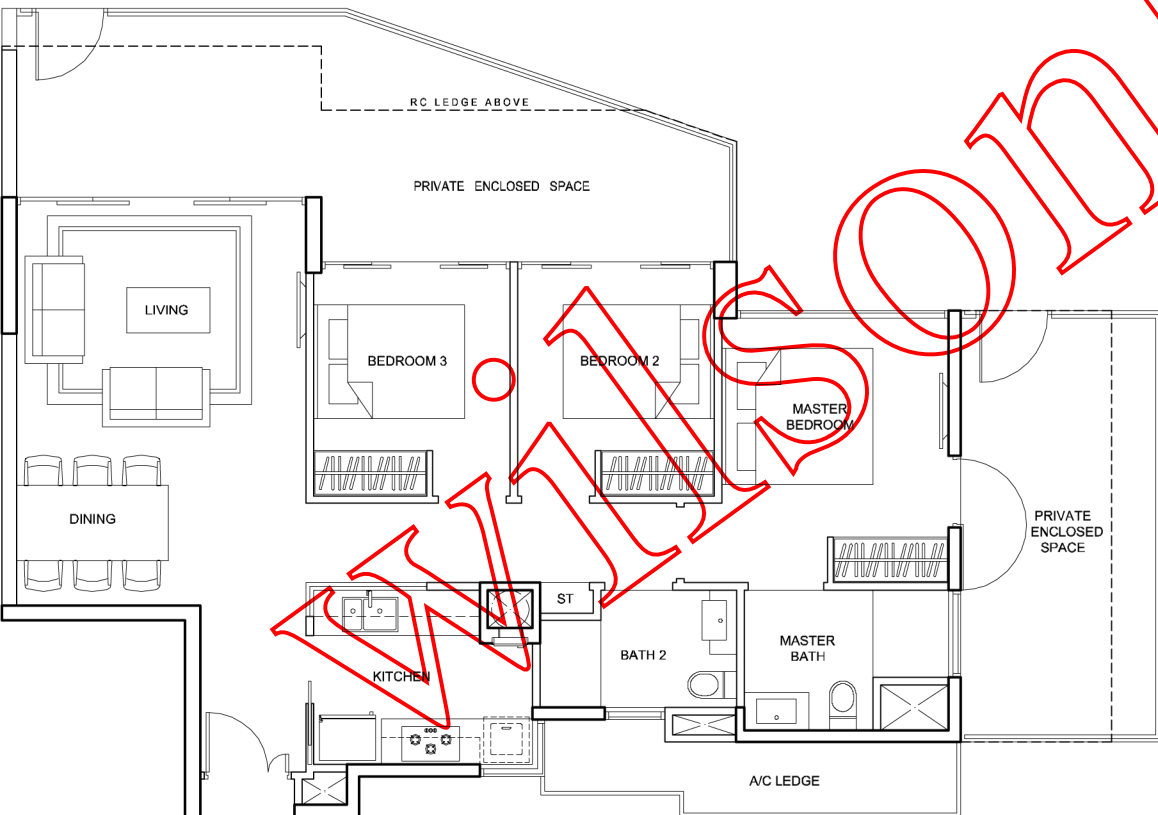
TYPE C1P2  
AREA: 123 SQ.M

Unit : # 01-04 (mirror image)



TYPE C1P4  
AREA: 123 SQ.M

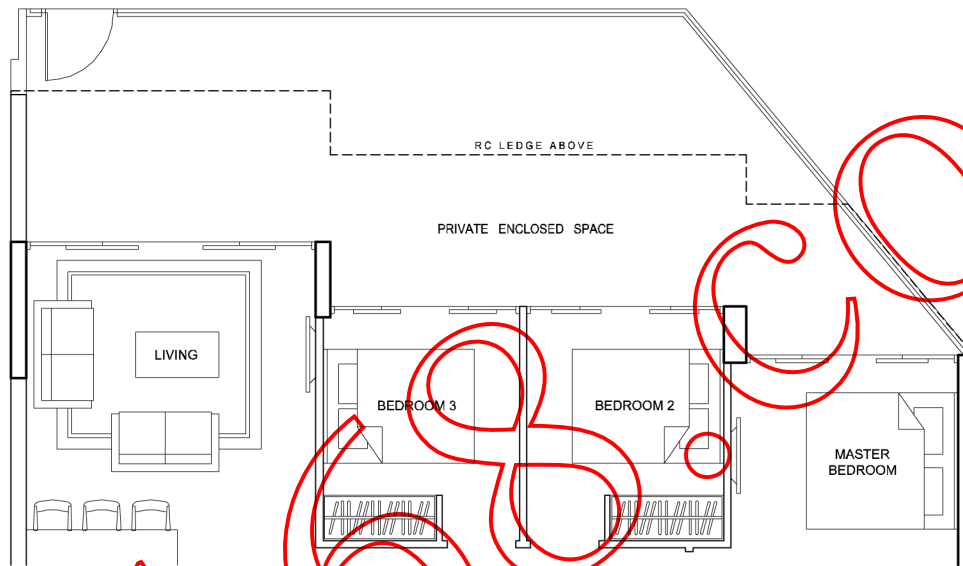
Unit : # 01-21



**DRAFT**

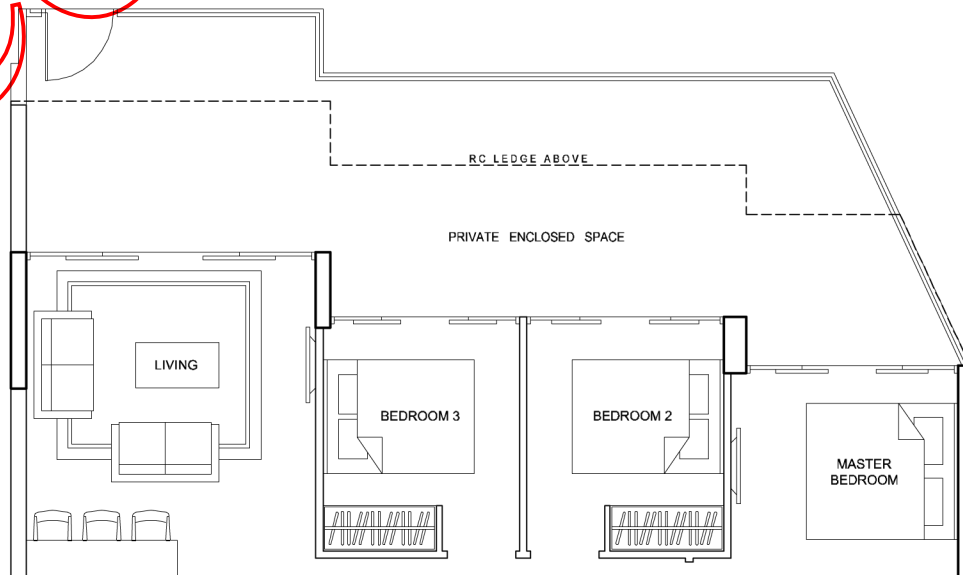
TYPE C1P3  
AREA: 123 SQ.M

Unit : # 01-12 (mirror image)

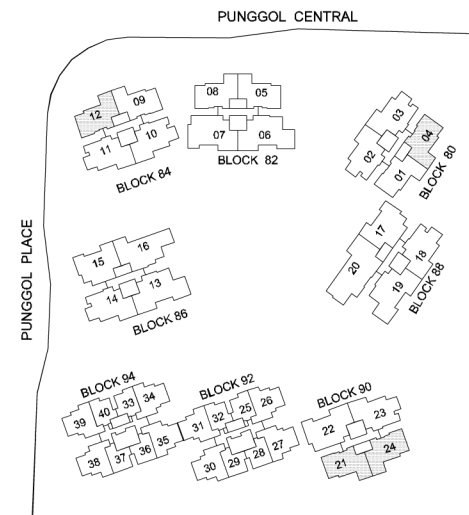


TYPE C1P5  
AREA: 123 SQ.M

Unit : # 01-24 (mirror image)



3 BEDROOM



Area includes A/C ledge , balcony , PES , open terrace and void (where applicable). Orientations and facings will differ depending on the unit you are purchasing. Please refer to the key plan. All plans are not to scale and are subject to changes as may be approved by the relevant authorities.All floor areas are estimates and are subject to final survey.